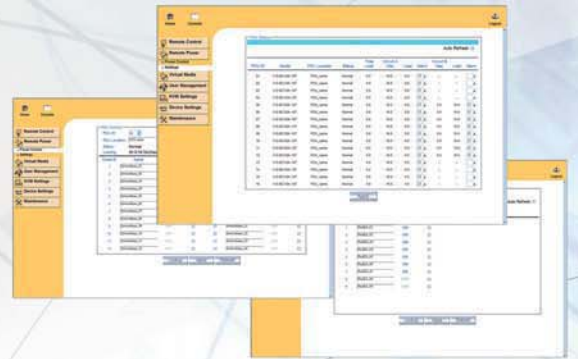


## Cat6 KVM access over IP from anywhere around the world



IP KVM provides remote management for multi-function devices







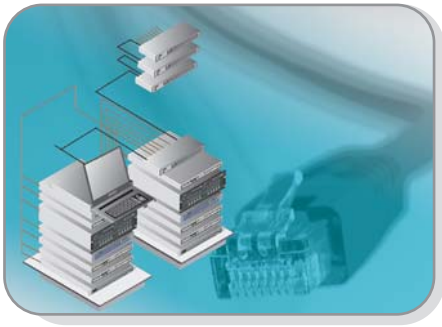
<b>Part I</b>	<b>Key Benefits of CyberView Cat6 IP KVM</b>	.....	P.1 - 2
<b>Part II</b>	<b>Matrix Cat6 KVM</b>	.....	P.3 - 4
<b>Part III</b>	<b>Combo Cat6 KVM</b>	.....	P.5 - 6
<b>Part IV</b>	<b>Multi-function Devices</b>		
■ InfraPower	Intelligent <i>PDU</i>	.....	P.7 - 8
■ InfraCool	Intelligent <i>Fan Units</i>	.....	P.9 - 10
<b>Part V</b>	<b>KVM Integration to CyberView LCD KB Drawer</b>	.....	P.11

## IP KVM Remote Access from anywhere around the world



Our CyberView Cat6 IP KVM provides secure IP remote user access across the World Wide Web, users can operate remotely reducing manpower and travel costs by negating the need for onsite operation.

## Up to 40m Distance between the server and KVM port using Cat6 patch cords



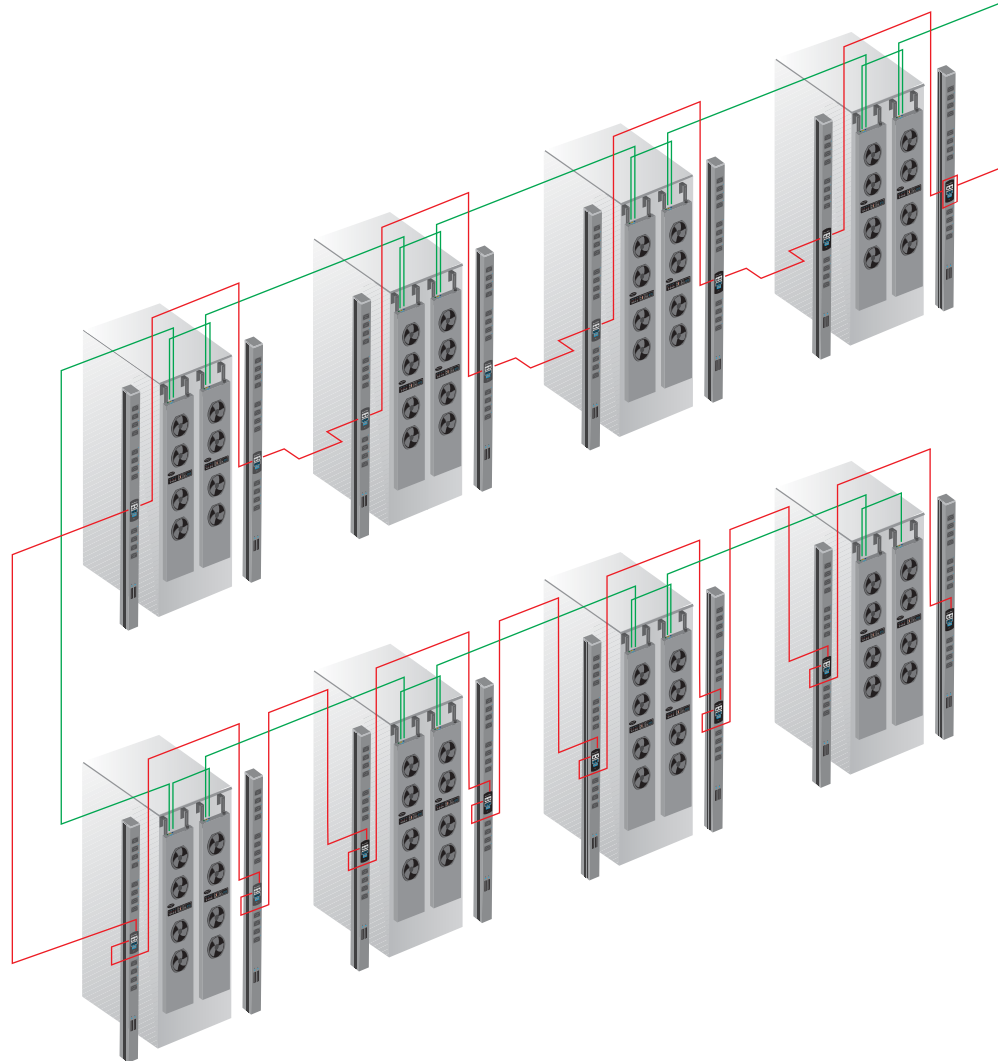
Using RJ45 or Cat6 patch cables instead of DB-15 allows greater distance between servers and KVM switches; in turn this provides greater flexibility in data center rack layouts and design.

## High Density KVM Solutions

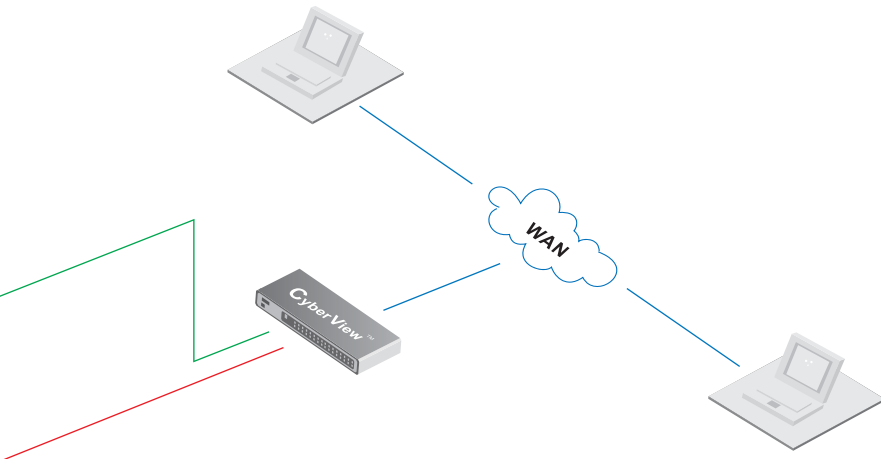


Cat6 KVM provides high density over traditional DB-15 KVM with either 16 or 32 ports in 1U of rack space. Cable management at the rear of the KVM is significantly improved by using patch cables over traditional coaxial KVM cables.

# Key Benefits of



# CyberView™ Cat6 IP KVM



## Using IP KVM for Remote Management of Multi-function Devices



Our next generation of CyberView IP KVM switches have been designed to provide centralized IP control of our InfraPower PDUs and InfraCool fan units. Using low cost expansion port connectivity our CyberView IP KVM switches will support up to 16 cascaded InfraPower MTS switched / MT monitored PDU units or up to 16 cascaded InfraCool IP / remote fan units.

## Flexible & Scalable Connectivity



CyberView Cat6 IP KVM switches support server interfaces including DVI-USB, VGA-USB and VGA-PS/2. Multi-platform connectivity allows users to mix legacy hardware platforms between DVI, USB, PS/2 and SUN solutions.

## Matrix Solutions Support Simultaneous Multi-user Access



CyberView Matrix IP KVM Solutions provide enhanced system management by allowing up to 4 users to work simultaneously from different locations on devices connected to the same KVM switch, this reduces KVM hardware expenditure and simplifies management.

## Full KVM Integration Capabilities to LCD Keyboard Drawers



CyberView provides probably the most flexible range that exists today in the 19" LCD, Keyboard Drawer and KVM switch market sector. One of our key features is the ability to seamlessly integrate our KVM switches in to the rear of our LCD drawers for saving valuable rack space and PDU outlet requirements at the rack.

# Matrix CAT6 IP KVM

MU-IP1613 / 3213  
 MU-IP1614 / 3214  
 MU-IP1624 / 3224



Designed for:



## Features & Benefits

- Provide simultaneous multi-users KVM access (maximum 4)
- Scalable solution is provided not only for VGA-USB and VGA-PS/2 interfaces but also DVI-USB interface
- Up to 40 meters between your servers and KVM ports
- Remote access up to 300 meters away via Cat6 cable
- Optional IP-based remote access function available
- Capable of connecting 32 or 16 servers per device in 1U
- Provide a diversity of consoles to access servers independently & simultaneously
- Use of the RJ45 Cat6 interface allows for higher number of ports in smaller density
- Greater distances between your switch and servers allow enhanced data center rack layouts
- Multi-lingual on screen display menu
- Advanced user profiles and configurable OSD hot key combinations

## Cat6 KVM Dongles



**DG-100SD**  
DVI-USB dongle



**DG-100S**  
VGA-USB dongle



**DG-100**  
VGA-PS/2 dongle

- Connect Cat5 / 5e / 6 cabling from the switch to the keyboard, video & mouse ports of target server
- Provide simply plug-n-play installation to any USB / SUN / iMac servers ( DVI-USB & VGA-USB dongles ) or PS/2 servers ( VGA-PS/2 dongle )
- With increased distance of 40m
- Reduce the clutter of multiple cables between tiers
- Save rack space efficiently

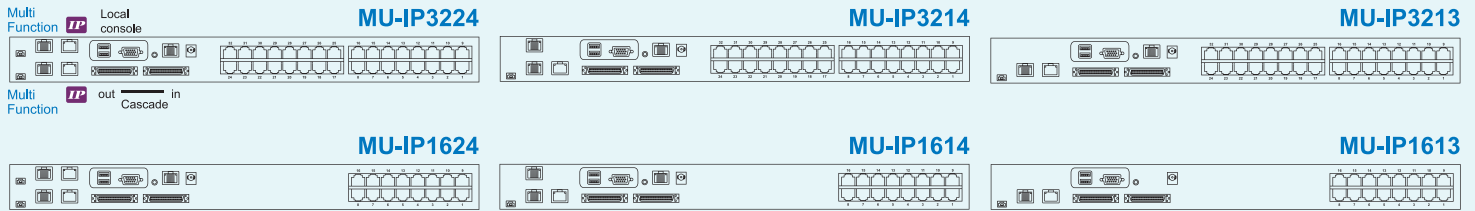
## Technical Specification

	MU-IP series
Simultaneous Console Access	Maximum 4 : Local ( 1 ) Cat6 Remote ( 1 or 2 ) IP Remote ( 1 or 2 )
KVM Port	32 / 16 x RJ45 connector
KVM Dongle	DVI-D / VGA connector dongle up to 40 meters ( 132 feet ) Cat6 / Cat5 cable
Local	1 x DB-15 VGA ( up to 1600 x 1200 ) 2 x USB for KB & MS
Remote ( 1 or 2 )	1 x RJ45, up to 300 meters Cat6 cable
Remote Receiver ( 1, 2 or 3 )	1 x DB-15 VGA ( up to 1600 x 1200 ), 2 x USB for KB & MS 1 x KVM port for connecting an extra PC
Expansion	Support mixed DB-15 or RJ45 Matrix KVM, up to 256 servers
Compatibility	Mix PCs, SUNs, MACs, IBMs, HPs, DELLs server Windows Vista / 2003 / XP / 2000, Linux, Netware, Unix
Power	100~240VAC, 50 / 60Hz via AC / DC cord
Regulatory Approval	FCC, CE
Environmental	Operating / Storage : 0 to 50°C / -5 to 60°C Relative humidity : 90%, non-condensing Shock : 50G peak acceleration ( 11ms, half-sine wave ) Vibration : 58~100Hz / 0.98G ( 11ms / cycle )
IP Access ( 1 or 2 )	1 x RJ45 Ethernet, 1 x RJ45 serial, 1 x USB port
IP Security	SSL v3, RSA, AES, CSR, http & https internet access 15-user login ( 1 x active user )

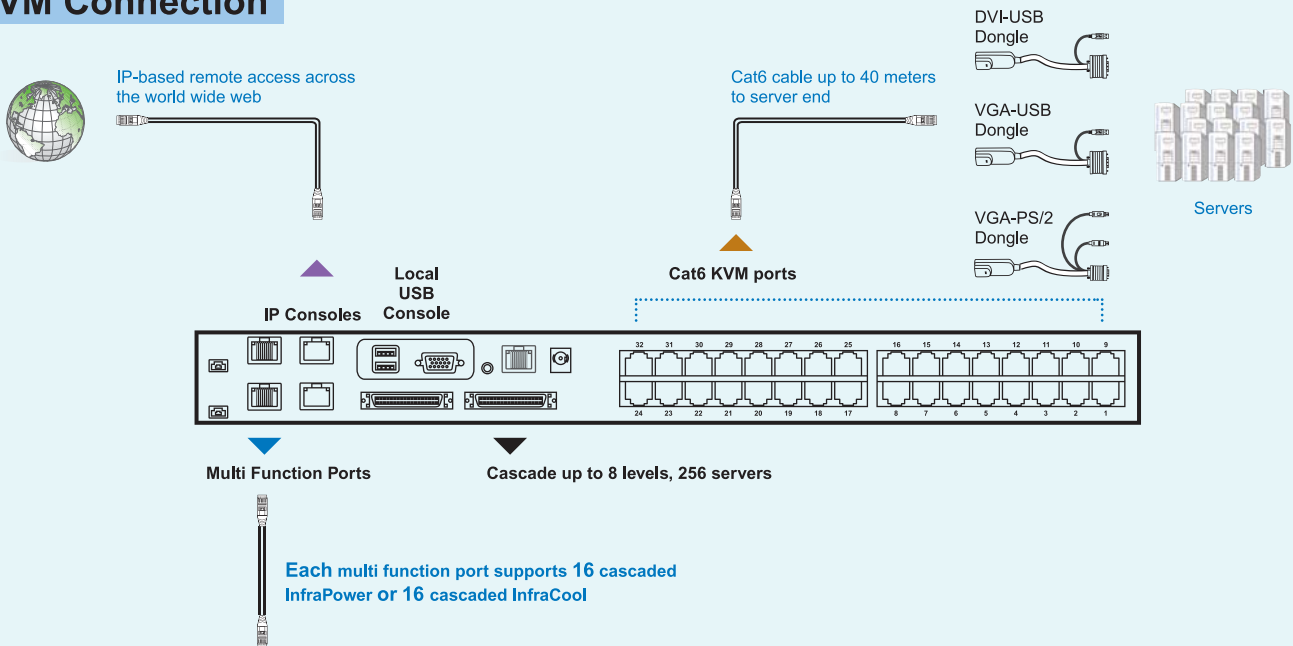
# Matrix CAT6 IP KVM

## Models Comparison

Model	Simultaneous Users Access	KVM Ports	IP Remote Console(s)	Total Consoles (Local + Remote)
MU-IP3224	4	32	2	4
MU-IP3214	4	32	1	4
MU-IP3213	3	32	1	3
MU-IP1624	4	16	2	4
MU-IP1614	4	16	1	4
MU-IP1613	3	16	1	3



## KVM Connection



**1**

### InfraPower®

**Intelligent Switched / Monitored PDU, Rackmount & Zero Mount available**

**2**

### InfraCool

**Intelligent IP / Remote Control Fan Unit, Rackmount Fan tray, Intake Rackmount Fan Panel and Extract Fan Panel for rear door available**

OR

# Combo CAT6 IP KVM

U-IP802  
U-IP1602  
U-IP3202



## Designed for:



## Features & Benefits

- Support multi-platform servers and multi-operating system
- Scalable solution is provided not only for VGA-USB and VGA-PS/2 interfaces but also DVI-USB interface
- Up to 40 meters between your servers and KVM ports
- Remote access up to 300 meters away via Cat6 cable
- Optional IP-based remote access function available
- Capable of connecting 32, 16 or 8 servers per device in 1U
- Use of the RJ45 Cat6 interface allows for higher number of ports in smaller density
- Greater distances between your switch and servers allow enhanced data center rack layouts
- Multi-lingual on screen display menu
- Advanced user profiles and configurable OSD hot key combinations
- Dual power with failover

## Cat6 KVM Dongles



**DG-100SD**  
DVI-USB dongle



**DG-100S**  
VGA-USB dongle



**DG-100**  
VGA-PS/2 dongle

- Connect Cat5 / 5e / 6 cabling from the switch to the keyboard, video & mouse ports of target server
- Provide simply plug-n-play installation to any USB / SUN / iMac servers ( DVI-USB & VGA-USB dongles ) or PS/2 servers ( VGA-PS/2 dongle )
- With increased distance of 40m
- Reduce the clutter of multiple cables between tiers
- Save rack space efficiently

## Technical Specification

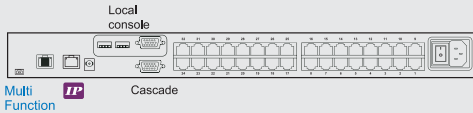
	U-IP series
<b>Console Access</b>	Maximum 2 : Local (1) IP Remote (1)
<b>KVM Port</b>	32 / 16 / 8 x RJ45 connector
<b>KVM Dongle</b>	DVI-D / VGA connector dongle up to 40 meters ( 132 feet ) Cat6 / Cat5 cable
<b>Local</b>	1 x DB-15 VGA ( up to 1600 x 1200 ) 2 x USB for KB & MS
<b>Expansion</b>	Support mixed DB-15 or RJ45 Matrix KVM, up to 256 servers
<b>Compatibility</b>	Mix PCs, SUNs, MACs, IBMs, HPs, DELLs server Windows Vista / 2003 / XP / 2000, Linux, Netware, Unix
<b>Power</b>	100~240VAC, 50 / 60Hz via IEC type cord ( 12V / 24V / 48V DC input option )
<b>Regulatory Approval</b>	FCC, CE
<b>Environmental</b>	Operating / Storage : 0 to 50°C / -5 to 60°C Relative humidity : 90%, non-condensing Shock : 50G peak acceleration ( 11ms, half-sine wave ) Vibration : 58~100Hz / 0.98G ( 11ms / cycle )
<b>IP Access</b>	1 x RJ45 Ethernet, 1 x RJ45 serial, 1 x USB port
<b>IP Security</b>	SSL v3, RSA, AES, CSR, http & https internet access 15-user login ( 1 x active user )



# Combo CAT6 IP KVM

## Models Comparison

U-IP3202



U-IP1602

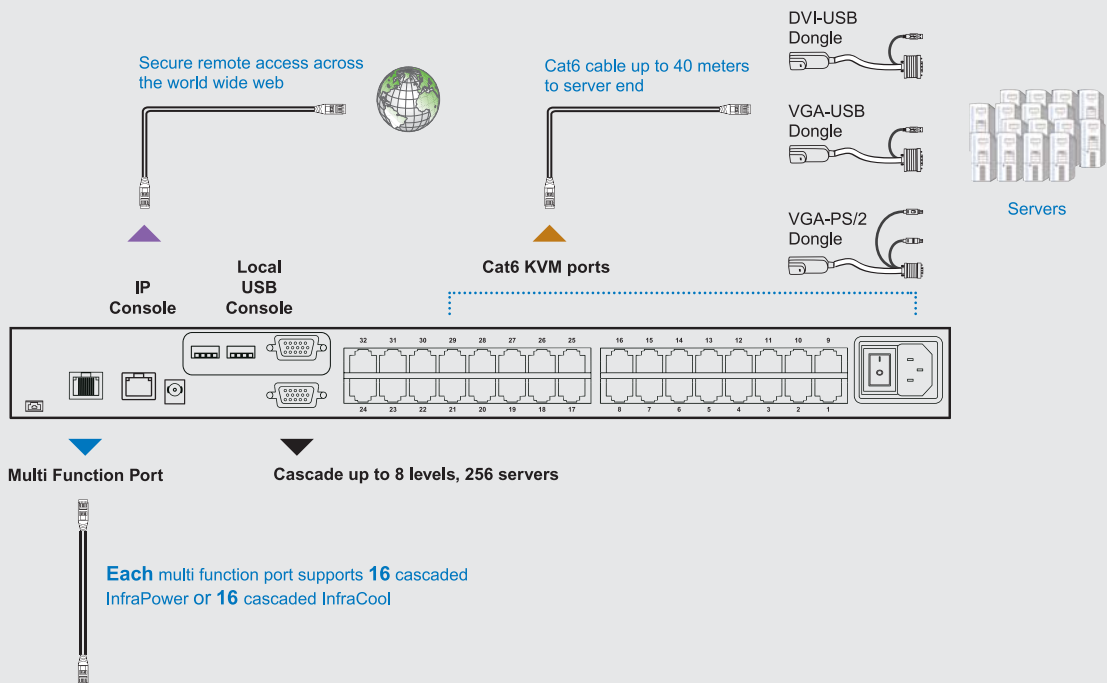


U-IP802



Model	KVM Ports	IP Remote	Total Consoles (Local + Remote)
U-IP3202	32	1	2
U-IP1602	16	1	2
U-IP802	8	1	2

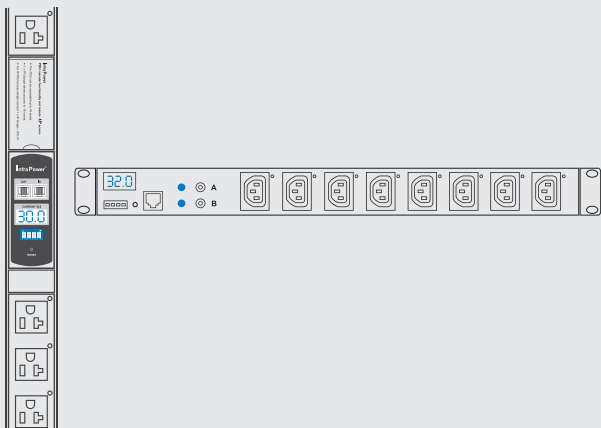
## KVM Connection



1

### InfraPower®

Intelligent Switched / Monitored PDU, Rackmount & Zero Mount available

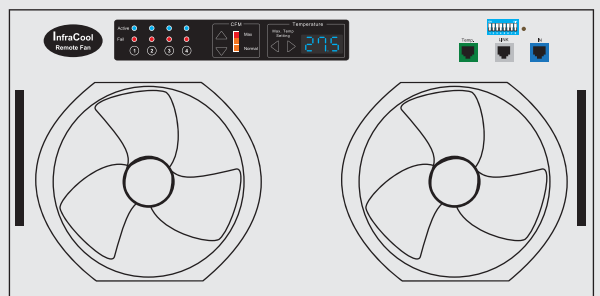


2

### InfraCool

Intelligent IP / Remote Control Fan Unit, Rackmount Fan tray, Intake Rackmount Fan Panel and Extract Fan Panel for rear door available

OR



## MTS Switched Series



The InfraPower Switch MTS Series is designed for mission critical data centers and remote sites. User can remote control the individual on/ off power socket on the MTS Series via CyberView Cat6 IP KVM. MTS can be cascaded up to a maximum of 16 PDUs using Cat6 patch cords and allowing access control and monitoring via a single IP address.

### Features & Benefits

- Remote control to individual outlets & remote monitoring of the aggregate current being drawn on the PDU
- True RMS current monitoring for receiving the most accurate current reading
- Indication of the switch ON / OFF status by the LED located near each outlet
- Supports daisy chain connection to maximum 16 MTS PDUs for centralized management by using a single IP
- Wide variety of outlets, input plugs, form factors for different requirement

## MT Monitored Series



The InfraPower Monitored MT Series PDU can also supports true RMS current remote monitoring via its own GUI or CyberView Cat6 IP KVM GUI management interface. The daisy chain of maximum 16 PDUs allows centralized remote monitoring via a single IP address. MT series can help reducing manpower and related travel costs on current monitoring in data center.

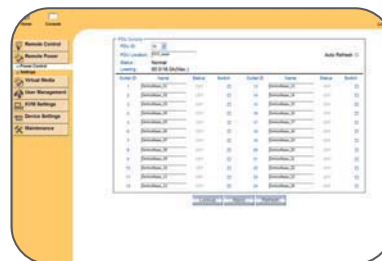
### Features & Benefits

- Provides true RMS aggregate current monitoring remotely for the individual PDU
- RMS current meter with blue light LED display for visible local current monitoring
- Supports daisy chain connection to maximum 16 intelligent PDUs
- Multiple configurations available for variety of application environments and power requirement



### Remote access via IP KVM switch

Allows the network manager to access both the KVM switch and the remote PDU.



### Remote Switching via GUI

Provides on / off status of each outlet and allows the IP remote outlet control / cycling of individual on / off power socket.



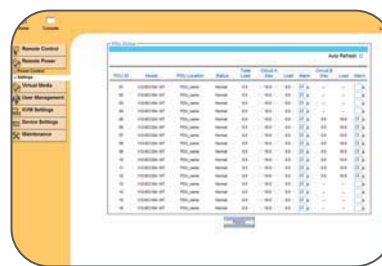
### Wide Variety of PDU configuration

The range of outlets, inputs plugs and PDU form factors meet various requirements.



### Cascade

Supports daisy chain connection allowing up to 16 PDUs to be cascaded via Cat6 cables.



### Remote Monitoring via GUI

Provides status of all connected PDUs and latest loading of each circuit of PDU.



### RMS current meter

Field-replaceable design helps eliminate maintenance downtime by simply replacing defective current meters without interruption of service.

### MTS Switched PDU ( Vertical )

Outlet Type	Voltage	Amp	Input Plug	24 Ways	22 Ways	20 Ways	18 Ways	16 Ways	14 Ways	12 Ways	10 Ways	8 Ways	6 Ways
NEMA	110V	20A 30A	5-20P 5-30P	✓		✓		✓		✓		✓	
IEC C13 (for US)	208V	30A	L6-30P	✓		✓		✓		✓		✓	
IEC C1319 (for US)	208V	30A	L6-30P	✓	✓	✓	✓	✓	✓	✓	✓	✓	✓
IEC C13	220V	16A 20A 30A	60309/C20 Open end 60309	✓		✓		✓		✓		✓	
IEC C1319	220V	32A	60309	✓	✓	✓	✓	✓	✓	✓	✓	✓	✓
UK	230V	13A 16A 20A 32A	BS1363 60309/C20 Open end 60309			✓		✓		✓		✓	

### MTS Switched PDU ( Horizontal )

Outlet Type	Voltage	Amp	Input Plug	20 Ways	18 Ways	16 Ways	14 Ways	12 Ways	10 Ways	8 Ways	7 Ways	6 Ways	5 Ways	4 Ways
NEMA	110V	20A 30A	5-20P 5-30P	✓		✓		✓		✓				✓
IEC C13 (for US)	208V	30A	L6-30P	✓		✓		✓		✓				✓
IEC C1319 (for US)	208V	30A	L6-30P		✓	✓	✓	✓		✓		✓		
IEC C13	220V	16A 20A 30A	60309/C20 Open end 60309	✓		✓		✓		✓				✓
IEC C1319	220V	32A	60309		✓	✓	✓	✓		✓		✓		

### MT Monitored PDU ( Vertical )

Outlet Type	Voltage	Amp	Input Plug	24 Ways	22 Ways	20 Ways	18 Ways	16 Ways	14 Ways	12 Ways	10 Ways	8 Ways	6 Ways
NEMA	110V	20A 30A	5-20P 5-30P	✓		✓		✓		✓		✓	
IEC C13 (for US)	208V	30A	L6-30P	✓		✓		✓		✓		✓	
IEC C1319 (for US)	208V	30A	L6-30P	✓	✓	✓	✓	✓	✓	✓	✓	✓	✓
IEC C13	220V	16A 20A 30A	60309/C20 Open end 60309	✓		✓		✓		✓		✓	
IEC C1319	220V	32A	60309	✓	✓	✓	✓	✓	✓	✓	✓	✓	✓
UK	230V	13A 16A 20A 32A	BS1363 60309/C20 Open end 60309	✓		✓		✓		✓		✓	
UK C1319	220V	32A	60309	✓	✓	✓	✓	✓					
GR	220V	16A 20A 30A	Schuko/60309/C20 Open end 60309			✓		✓		✓		✓	

### MT Monitored PDU ( Horizontal )

Outlet Type	Voltage	Amp	Input Plug	24 Ways	20 Ways	16 Ways	10 Ways	8 Ways	6 Ways	5 Ways	4 Ways	2 Ways
NEMA	110V	20A 30A	5-20P 5-30P	✓	✓	✓	✓	✓	✓	✓	✓	
IEC C13 (for US)	208V	30A	L6-30P		✓	✓	✓	✓	✓	✓	✓	
IEC C1319 (for US)	208V	30A	L6-30P		✓	✓		✓	✓		✓	✓
IEC C13	220V	16A 20A 30A	60309/C20 Open end 60309		✓	✓	✓	✓	✓	✓	✓	
IEC C1319	220V	32A	60309		✓	✓		✓	✓		✓	✓

# InfraCool

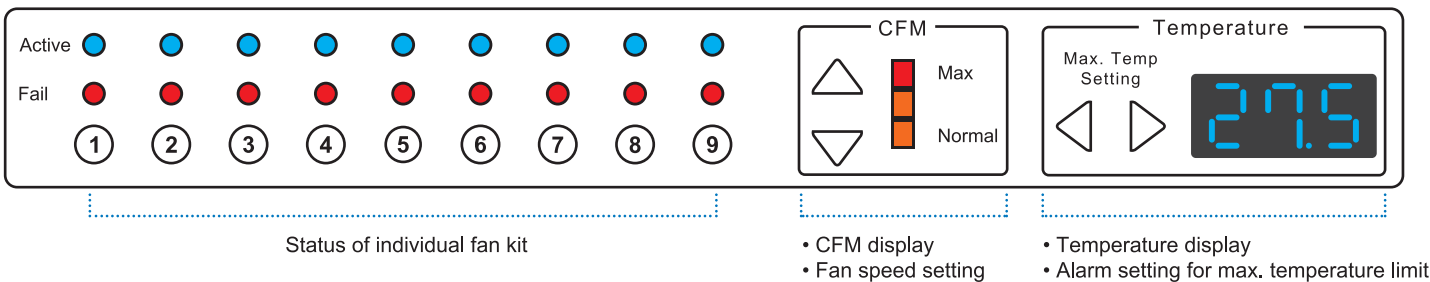


InfraCool intelligent fan units are designed for the thermal management in data centers. The controllable fan units provides the remote on / off capabilities and automatic fan speed adjustment according to the temperature variation. Centralized remote management for maximum 16 InfraCool IP / remote fan units via CyberView IP Cat6 KVM provides an efficient way to solve the heat density problem in rack cabinets.

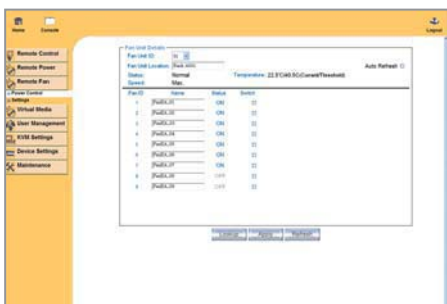
## Features & Benefits

- Intelligent and cost effective rack level thermal management
- Centralized management for maximum 16 intelligent fan units in a cascade group via the web-based CyberView IP KVM GUI
- Remotely real-time monitoring function reduces travel cost and improves uptime and productivity
- External temperature sensor with a 6 feet cable for the temperature detection and automatic temperature dependent speed control
- Low fan speed at low temperature for power saving and minimizing noise level
- Higher fan speed in rising temperature for delivering the appropriate fan speed as demand increases
- Wide range in form factors (fan tray, front rack mount and rear door mount) for the cooling on different areas of the cabinet
- Different cooling ways (intake for cooling with air, extract for heat dissipation) are available for the optimum cooling performance
- Complete line of InfraCool models which can work with each others for providing the best solution in optimizing rack-level air flow
- Choices of models with small fan kits and large fan kits are available, depending on the cooling level required at the environment
- Customized configurations include DC power inputs
- Simple mounting design for easy installation

## Monitoring & Control for InfraCool



## Remote Monitoring & Control for InfraCool via the Simple GUI of CyberView™ Cat6 IP KVM



### Monitoring / Switching for Fan Unit

- Status and speed level of the fan unit
- ON / OFF status of each fan kit
- Monitoring on the temperature in cabinet
- Remote ON / OFF for individual fan kit

## Rackmount Fan Tray

Fan Units	Product Series	Remote Control	IP
1U, Rackmount fan tray, 3 small fans - with AC power - with -24V DC power - with -48V DC power	RF-1.3S	IPF-1.3S	
	RF-1.3S / DC24	IPF-1.3S / DC24	
	RF-1.3S / DC48	IPF-1.3S / DC48	
1U, Rackmount fan tray, 6 small fans - with AC power - with -24V DC power - with -48V DC power	RF-1.6S	IPF-1.6S	
	RF-1.6S / DC24	IPF-1.6S / DC24	
	RF-1.6S / DC48	IPF-1.6S / DC48	
1U, Rackmount fan tray, 9 small fans - with AC power - with -24V DC power - with -48V DC power	RF-1.9S	IPF-1.9S	
	RF-1.9S / DC24	IPF-1.9S / DC24	
	RF-1.9S / DC48	IPF-1.9S / DC48	
2U, Rackmount fan tray, 2 large fans - with AC power	RF-2.2L	IPF-2.2L	
2U, Rackmount fan tray, 4 large fans - with AC power	RF-2.4L	IPF-2.4L	



Remarks: Top fan trays available on customer's request

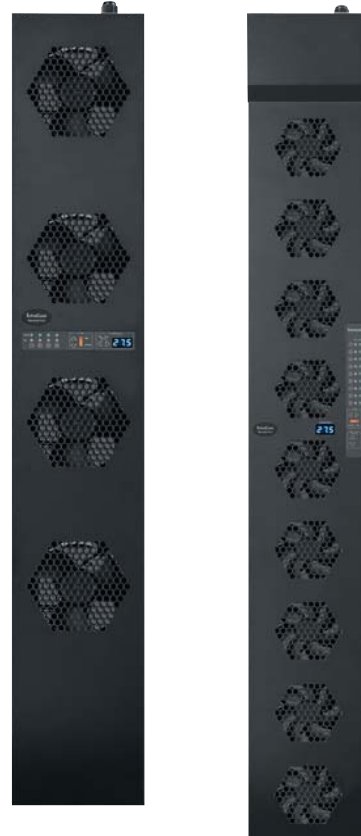
## Intake Rackmount Fan Panel

Fan Units	Product Series	Remote Control	IP
5U, intake fan panel, 2 large fans - with AC power	RF-5.2L / IT	IPF-5.2L / IT	
5U, intake fan panel, 3 small fans - with AC power - with -24V DC power - with -48V DC power	RF-5.3S / IT	IPF-5.3S / IT	
	RF-5.3S / IT / DC24	IPF-5.3S / IT / DC24	
	RF-5.3S / IT / DC48	IPF-5.3S / IT / DC48	
8U, intake fan panel, 6 small fans - with AC power - with -24V DC power - with -48V DC power	RF-8.6S / IT	IPF-8.6S / IT	
	RF-8.6S / IT / DC24	IPF-8.6S / IT / DC24	
	RF-8.6S / IT / DC48	IPF-8.6S / IT / DC48	
9U, intake fan panel, 4 large fans - with AC power	RF-9.4L / IT	IPF-9.4L / IT	



## Extract Fan Panel for Rear Door

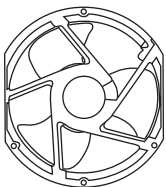
Fan Units	Product Series	Remote Control	IP
32U, extract fan panel, 9 small fans - with AC power	RF-32.9S / ET	IPF-32.9S / ET	
28U, extract fan panel, 4 large fans - with AC power	RF-28.4L / ET	IPF-28.4L / ET	



Remarks: Tailor-made models in shorter length and selected fan kit quantity for rear door with swing handle are available on customer's request.

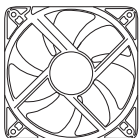
### Technical Specification of Fan Kits

#### Large Fan Kit



Air Delivery	: 417 CFM
Rate Speed	: 6200 RPM +/-10%
Rated Voltage	: 48 VDC
Rated Current	: 1550 mA
Noise Level	: 71 dB
Dimension	: 170 x 150 x 51 mm
Bearing System	: Precision ball bearing system
Protection	: Automatic restart capability

#### Small Fan Kit

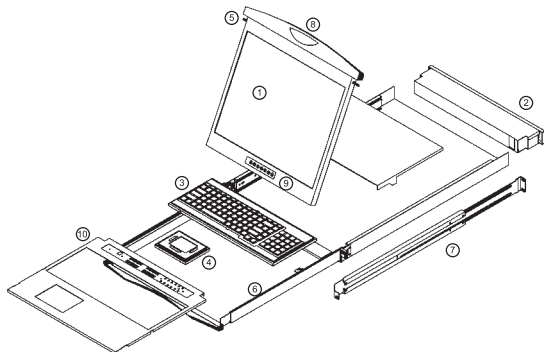


Air Delivery	: 108 CFM
Rate Speed	: 3100 RPM +/-10%
Rated Voltage	: 12 VDC
Rated Current	: 451 mA
Noise Level	: 45 dB
Dimension	: 120 x 120 x 25 mm
Bearing System	: Precision ball bearing system
Protection	: Automatic restart capability

# KVM Integration to CyberView™ LCD Keyboard Drawer

## Modular Design of CyberView KVM

Optional modular form factor which are interchangeable in the same CyberView LCD drawer chassis.



1. LCD interchangeable module kit
2. KVM interchangeable module kit
3. Keyboard interchangeable module kit
4. Mouse interchangeable module kit
5. 2-point lock
6. Micro switch for screen auto power off
7. "One Man" installation slides for quick installation
8. Carry handle to release the 2-point lock
9. 7-button LCD OSD membrane with a power LED
10. KVM membrane

### Model No. of CyberView LCD Keyboard Drawer with KVM

LCD Keyboard Drawer Model No. — KVM Model No.

Examples :  
RKP117 - MUIP3224  
DS117 - UIP3202  
W119 - UIP801

## CyberView LCD Keyboard Drawer

The CyberView CAT6 IP KVM models can be integrated to the full range of CyberView LCD drawer models :

**RKP Series** offers advanced design and cost-effective solution in LCD keyboard drawer & KVM market

	RKP-117	RKP-119	S-117	S-119	RKP-1417	RKP-1419
Panel Size	17"	19"	17"	19"	17"	19"
Screen Ratio	4:3	4:3	4:3	4:3	4:3	4:3
Resolution	1280 x 1024	1280 x 1024	SUN native 1152 x 900	SUN native 1152 x 900	1280 x 1024	1280 x 1024
W x D x H ( mm )	442 x 650 x 44	442 x 650 x 44	442 x 650 x 44	442 x 650 x 44	442 x 480 x 44	442 x 480 x 44
Keyboard Options	Ne / Nb	Ne / Nb	Se / Sb	Se / Sb	Ne / Nb	Ne / Nb



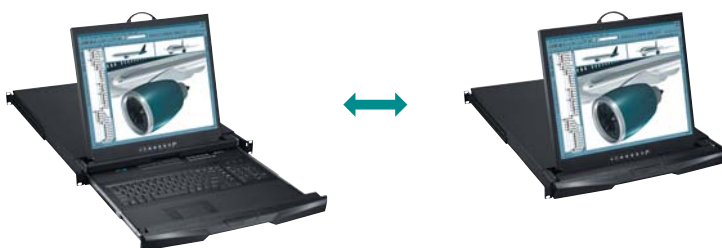
**N Series** aesthetically enhanced latching front panel design for convenience in usage

	N-117	N-119	NS-117	NS-119	N-1417	N-1419
Panel Size	17"	19"	17"	19"	17"	19"
Screen Ratio	4:3	4:3	4:3	4:3	4:3	4:3
Resolution	1280 x 1024	1280 x 1024	SUN native 1152 x 900	SUN native 1152 x 900	1280 x 1024	1280 x 1024
W x D x H ( mm )	442 x 650 x 44	442 x 650 x 44	442 x 650 x 44	442 x 650 x 44	442 x 480 x 44	442 x 480 x 44
Keyboard Options	Ne / Nb	Ne / Nb	Se / Sb	Se / Sb	Ne / Nb	Ne / Nb



**D Series** specific Dual Slide design for flexible usage

	D-117	DS-117
Panel Size	17"	17"
Screen Ratio	4:3	4:3
Resolution	1280 x 1024	SUN native 1152 x 900
W x D x H ( mm )	442 x 650 x 44	442 x 650 x 44
Keyboard Options	Ne	Se



**W Series** widest LCD in 1U KB drawer

	W-119	WS-119
Panel Size	Wide 19"	Wide 19"
Screen Ratio	16:10	16:10
Resolution	1440 x 900	SUN native 1152 x 900
W x D x H ( mm )	442 x 600 x 44	442 x 600 x 44
Keyboard Options	Ne / Nb	Se / Sb



### LCD Specifications

	17"	19"	19" Wide	20"
Screen	4 : 3	4 : 3	16 : 10	4 : 3
Display Type	Active Matrix TFT	Active Matrix TFT	Active Matrix TFT	Active Matrix TFT
Native Resolution	1280 x 1024	1280 x 1024	1440 x 900	1600 x 1200
Contrast ratio	1000 : 1	1000 : 1	1000 : 1	800 : 1
Brightness ( cd/m <sup>2</sup> )	250	250	300	300
Viewing angle ( H x V )	160 / 160	160 / 160	160 / 160	178 / 178
Display colour	16.7M	16.7M	16.7M	16.7M
Response Time	Tr=1.3 / Tf=3.7	Tr=1.3 / Tf=3.7	Tr=1.3 / Tf=3.7	Tr=7 / Tf=9
Pixel pitch ( H x V )	0.264 x 0.264	0.294 x 0.294	0.284 x 0.284	0.255 x 0.255

**L Series** largest LCD in 1U KB drawer

	L-120	LS-120
Panel Size	20"	20"
Screen Ratio	4:3	4:3
Resolution	1600 x 1200	SUN native 1152 x 900
W x D x H ( mm )	442 x 650 x 44	442 x 650 x 44
Keyboard Options	Ne	Se





Founded in 1995, **Austin Hughes Electronics Ltd** is a design and manufacturing group that offers a broad range of solutions based around 19 inch rack mount technology. These solutions include InfraSolution remote access control and locking, InfraPower intelligent remote management power solutions, CyberView LCD Keyboard and KVM drawers & InfraCool intelligent remote cooling system.

**Austin Hughes** has ISO14001 and ISO9001 approved design, manufacturing, assembly and test facilities in Hong Kong and China. Austin Hughes supports a worldwide customer base, through its global locations in Europe the United States and Japan, and through its extensive authorized channel partner support network.

**US****Austin Hughes Solutions Inc.**

8668 Thornton Ave, Newark  
California 94560

USA

**Tel:** (1) 510 794-2888**Email:** [cyberview-sales@austin-hughes.com](mailto:cyberview-sales@austin-hughes.com)**Europe****Austin Hughes Europe Ltd.**

Unit 1, Chancery Gate Business Centre  
Manor House Avenue

Southampton, SO15 0AE

United Kingdom

**Tel:** +44 (0) 2380 529303**Email:** [info@austin-hughes.eu](mailto:info@austin-hughes.eu)**South Africa****Austin Hughes SA****HK****Austin Hughes Electronics Ltd.**

Unit 3608-3612, Cable TV Tower  
9 Hoi Shing Road, Tsuen Wan

Hong Kong

**Tel:** (852) 2415 2121**Email:** [cyberview-sales@austin-hughes.com](mailto:cyberview-sales@austin-hughes.com)**China****Austin Hughes Electronics (China) Ltd.**

Hexi Road No.2, Jinxia Industrial Area  
Changan Town, Dongguan City

Guangdong Province 523850

China

**Middle East****Austin Hughes Middle East**

P.O. Box 43425

Dubai

United Arab Emirates

**Tel:** (971) 50 4532127**Email:** [info@austin-hughes.eu](mailto:info@austin-hughes.eu)

**Austin Hughes** has an extensive distribution network, including Europe, the United States, the Middle East, Africa and Asia Pacific  
Contact your nearest sales office for details of local representation

**[www.austin-hughes.com](http://www.austin-hughes.com)**

Please ask for details of other products from Austin Hughes. Every effort has been made to ensure that the information contained herein is correct. The company reserves the right to modify product specifications without prior notice and assumes no responsibility for any error which may appear in this publication.

All brand names, logo and registered trademarks are properties of their respective owners.

Copyright 2010 Austin Hughes Electronics Ltd. All rights reserved.

**Distributed by:****Distributor by country on application**

Cat61PKVM-C10